



Water Supply and Snow Survey Bulletin – January 1, 2010

The January 1 snow survey is now complete. Data from 74 snow courses and 48 snow pillows around the province, with 6 out-of-province sampling locations and climate data from Environment Canada, have been used to form the basis for the following reports¹.

Weather

Weather during October for the majority of the province was warm and wet, with above normal precipitation throughout BC. In November, a series of sub-tropical storm systems brought continued moisture to the south and central coast. The central interior received close to normal precipitation, while the south east and south central BC were drier than normal. For December, a high pressure ridge brought cold temperatures to much of the province, and the drying trend continued with below normal precipitation recorded at the majority of weather stations.

Snowpack

Basin snow water indices across BC at January 1 vary from a low of 75% of normal in the Skeena-Nass basin to a high of 123% of normal in the Upper Fraser. The Middle Fraser, Lower Fraser and South Coast basins are also above normal. The Okanagan-Kettle and Similkameen basins are slightly below normal. All other basins are near normal for this survey date.

BC Snow Basin Indices – January 1, 2010

Basin	% of Normal	Basin	% of Normal
Upper Fraser	123%	Kootenay	95%
Nechako	98%	Okanagan-Kettle	86%
Middle Fraser	116%	Similkameen	86%
Lower Fraser	119%	South Coast	115%
North Thompson	110%	Vancouver Island	107%
South Thompson	98%	Peace	90%
Columbia	108%	Skeena-Nass	75%

Outlook

By this date, generally about one-half of the BC snowpack has accumulated. This first snow survey bulletin for the year is based on limited data, and more data will be available in subsequent surveys. Conditions as of January 1st do not indicate significant potential for flood or drought risk. However, given the drought conditions this past summer for the south central interior (Thompson, Okanagan, Nicola, Similkameen, Kettle, and others), an above normal snowpack by April 1st will be needed to replenish the diminished groundwater, lake and reservoir storage in those regions.

1. Every effort is made to ensure that data reported on these pages are accurate. However, in order to update the graphs and indices as quickly as possible, some data may have been estimated. Please note that data provided on these pages are preliminary and subject to revision upon review.

UPPER FRASER Drainage Basin

Snow Course Name and Number	Elev. metres	Date of Survey	Jan 2010			Historic, Water Equivalent (mm)					Yrs of Record	
			Snow Depth cm	Water Equiv. mm	% of Normal	2009 mm	2008 mm	Max. mm	Min. mm	Normal mm		
PRINCE GEORGE A	1A10	690	12/31/2009	40	68	97	57	72	156	0	70	47
PACIFIC LAKE	1A11	770	1/2/2010	134	381	123	287	306	476	56	310	26
BURNS LAKE	1A16	800					96	114	192	10	77	35
PHILIP LAKE	4A13	980	1/6/2010	69	139	93	132	175	288	48	150	27
HEDRICK LAKE	1A14	1100	1/1/2010	144	414	124	365	389	640	94	335	18
HEDRICK LAKE	1A14P	1100	1/1/2010	N/A	471	149	378		503	139	315*	9
KAZA LAKE	1A12	1190	1/6/2010	55	92	48	192	174	371	108	190	24
LU LAKE	4B15P	1310	1/1/2010	34	135	101	160	161	289	41	134*	12
MOUNT SHEBA	4A18	1490	1/2/2010	168	559	140	377	494	793	106	400	21
BARKERVILLE	1A03P	1520	1/1/2010	N/A	183E	109		128A	312	38	168	28
KNUDSEN LAKE	1A15	1580	1/1/2010	148	498	121	422		821	125	410	18
MCBRIDE (UPPER)	1A02P	1620		Not Sampled			220A	184	270	184	227*	3
REVOLUTION CREEK	1A17P	1690	1/1/2010	181	472	114		365A	814	191	415	24
LONGWORTH (UPPER)	1A05	1740	1/1/2010	159	510	146	390	526	694	114	350	19
DOME MOUNTAIN	1A19P	1820	1/1/2010	N/A	353	98	345	341	413	341	377*	3
YELLOWHEAD	1A01P	1860	1/1/2010	N/A	412	121	259	278	428	184	340	13

NECHAKO Drainage Basin

Snow Course Name and Number	Elev. metres	Date of Survey	Jan 2010			Historic, Water Equivalent (mm)					Yrs of Record	
			Snow Depth cm	Water Equiv. mm	% of Normal	2009 mm	2008 mm	Max. mm	Min. mm	Normal mm		
SKINS LAKE	1B05	880				52	94	127	0	65	24	
TAHTSA LAKE	1B02P	1300	1/1/2010	N/A	701	100	652	628	1155	369	703	17
MOUNT PONDOSY	1B08P	1400	1/1/2010	N/A	399	88	338	399	686	204	451	16
MOUNT WELLS	1B01P	1490	1/1/2010	N/A	316	96	424	293	518	131	328	17

MIDDLE FRASER Drainage Basin

Snow Course Name and Number	Elev. metres	Date of Survey	Jan 2010			Historic, Water Equivalent (mm)					Yrs of Record	
			Snow Depth cm	Water Equiv. mm	% of Normal	2009 mm	2008 mm	Max. mm	Min. mm	Normal mm		
GRANITE MOUNTAIN	1C33A	1150	12/30/2009	50	116	116	112	83	158	26	100	17
BRIDGE GLACIER (LOWER)	1C39	1400	12/27/2009	163	466	154	86	328	456	86	302*	14
BRALORNE	1C14	1450	12/27/2009	52	118	131	38	97	158	33	90	14
BOSS MOUNTAIN MINE	1C20P	1460	1/1/2010	N/A	336	105	266	394	461	184	320	16
LAC LE JEUNE (UPPER)	1C25	1460	12/30/2009	30	61	81	45	46	146	10	75	37
BRENDA MINE	2F18P	1460	1/1/2010	N/A	151	84		174	304	100	186	14
BARKERVILLE	1A03P	1520	1/1/2010	N/A	183	109		128A	312	38	168	28
YANKS PEAK EAST	1C41P	1670	1/1/2010	113	423	100	425	484	491	199	422	13
GREEN MOUNTAIN	1C12P	1780	1/1/2010	N/A	664	151	192	491	750	192	440	16
MCGILLIVRAY PASS	1C05	1800	12/27/2009	149	406	156	140		458	140	260	15
MISSION RIDGE	1C18P	1850	1/1/2010	N/A	324E	119	151	246	659	148	272	23
DOWNTON LAKE (UPPER)	1C38	1890	12/27/2009	202	664	156		610	690	272	425	13
TYAUGHTON CREEK (NORTH)	1C40	1950	12/27/2009	125	418	239	92	280	364	92	175	13
BRALORNE(UPPER)	1C37	1980	12/27/2009	147	472	128	116	338	504	195	368	14

LOWER FRASER Drainage Basin

Snow Course Name and Number	Elev. metres	Date of Survey	Jan 2010			Historic, Water Equivalent (mm)					Yrs of Record	
			Snow Depth cm	Water Equiv. mm	% of Normal	2009 mm	2008 mm	Max. mm	Min. mm	Normal mm		
DISAPPOINTMENT LAKE	1D18P	932	1/1/2010	N/A	682	93	392	755	1304	355	735	7
DICKSON LAKE	1D16	1070	12/28/2009	134	550	77	2120		2120	274	715*	14
DOG MOUNTAIN	3A10	1080	12/29/2009	117	548	114	360A	687	897	96	480	23
BEAVER PASS	WA12	1120	1/1/2010	132	378	121		338	615	109	312*	12
KLESILKWA	3D03A	1130	12/28/2009	26	84	45		144	386	0	185	18
SPUZZUM CREEK	1D19P	1180	1/1/2010	169	690	101	334	664	1231	326	656*	11
STAVE LAKE	1D08	1210	12/28/2009	174	746	118		2010	3150	112	630	16
WAHLEACH LAKE	1D09	1400	12/28/2009	66	224	86			417	46	260	21
WAHLEACH LAKE	1D09P	1400	1/1/2010	N/A	399	77	250	448	777	235	520	17
NAHATLATCH RIVER	1D10	1520	12/28/2009	223	850	142			2690	219	600	14
EASY PASS	WA13	1580	1/1/2010	122	488	65		1720	1651	229	755	20
CHILLIWACK RIVER	1D17P	1600	1/1/2010	178	686	92	420	675	1165	383	659*	17
TENQUILLE LAKE	1D06P	1680	1/1/2010	111	638	138	278	544	780	278	469*	9

NORTH THOMPSON Drainage Basin

Snow Course Name and Number	Elev. metres	Date of Survey	Jan 2010			Historic, Water Equivalent (mm)					Yrs of Record	
			Snow Depth cm	Water Equiv. mm	% of Normal	2009 mm	2008 mm	Max. mm	Min. mm	Normal mm		
BOSS MOUNTAIN MINE	1C20P	1460	1/1/2010	N/A	336	105	266	394	461	184	320	16
MOUNT COOK	1E02P	1550	1/1/2010	228	675	120	551	881	881	439	606*	8
AZURE RIVER	1E08P	1620	1/1/2010	182	689	111	461	713	780	356	620	13
KOSTAL LAKE	1E10P	1770	1/1/2010	125	N/A	N/A	420	551	590	271	453	25

SOUTH THOMPSON Drainage Basin

Snow Course Name and Number	Elev. metres	Date of Survey	Jan 2010			Historic, Water Equivalent (mm)					Yrs of Record	
			Snow Depth cm	Water Equiv. mm	% of Normal	2009 mm	2008 mm	Max. mm	Min. mm	Normal mm		
MONASHEE PASS	2E01	1370	1/07/2010	70	169	102	158	137	239	84	165	26
CELISTA	1F06P	1500	1/1/2010	164	499	112	326	446	555	326	484*	4
KIRBYVILLE LAKE	2A25	1750	12/26/2009	216	716	115	496	706	854	351	620	25
PARK MOUNTAIN	1F03P	1890	1/1/2010	N/A	346E	81	345		632	256	427	23

UPPER COLUMBIA Drainage Basin

Snow Course Name and Number	Elev. metres	Date of Survey	Jan 2010			Historic, Water Equivalent (mm)					Yrs of Record	
			Snow Depth cm	Water Equiv. mm	% of Normal	2009 mm	2008 mm	Max. mm	Min. mm	Normal mm		
DOWNIE SLIDE (LOWER)	2A27	980	12/26/2009	112	298	93	248	340	504	166	320	22
GLACIER	2A02	1250	12/28/2009	106	312	95	255	347	519	147	328	39
VERMONT CREEK	2A19	1520	12/29/2009	81	223	97	93	242	328	91	230	25
AZURE RIVER	1E08P	1620	1/1/2010	182	689	111	461	713	780	356	620	13
DOWNIE SLIDE (UPPER)	2A29	1630	12/26/2009	235	832	121	480		1022	370	690	21
KICKING HORSE	2A07	1650	12/29/2009	62	136	78	200	145	257	66	175	30
KIRBYVILLE LAKE	2A25	1750	12/26/2009	216	716	115	496	706	854	351	620	25
MOUNT REVELSTOKE	2A06P	1830		Not Sampled					835	317	599	14
FIDELITY MOUNTAIN	2A17	1870	12/28/2009	189	669	108	570	772	1228	334	617	35
BEAVERFOOT	2A11	1890	12/29/2009	48	110	92	42	120	215	52	120	25
KEYSTONE CREEK	2A18	1890	12/26/2009	160	509	127	306	466	577	217	400	25
GOLDSTREAM	2A16	1920	12/26/2009	185	612	102	524	784	906	355	598	25
BUSH RIVER	2A23	1920	12/26/2009	159	514	116	298	476	722	216	442	25
MOUNT ABBOT	2A14	1980	12/27/2009	197	684	111	533	756	1065	298	615	25
MOLSON CREEK	2A21P	1980	1/1/2010	N/A	679	122	458	690	1072	318	558	29
SUNBEAM LAKE	2A22	2010	12/26/2009	174	583	123	434	514	767	243	475	25

LOWER COLUMBIA Drainage Basin

Snow Course Name and Number	Elev. metres	Date of Survey	Jan 2010			Historic, Water Equivalent (mm)					Yrs of Record	
			Snow Depth cm	Water Equiv. mm	% of Normal	2009 mm	2008 mm	Max. mm	Min. mm	Normal mm		
FERGUSON	2D02	880	12/30/2009	107	290	105	191	301	409	93	275	30
FARRON	2B02A	1220	1/6/2010	70	148	95	152	126	330	40	155	25
MONASHEE PASS	2E01	1370	1/07/2010	70	169	102	158	137	239	84	165	26
WHATSHAN (UPPER)	2B05	1480	1/07/2010	Not Sampled				276	543	169	340	20
BARNES CREEK	2B06	1620	1/07/2010	101	256	98	221	237	376	146	260	21
BARNES CREEK	2B06P	1620	1/1/2010	N/A	236	85	233		409	158	278	16
ST. LEON CREEK	2B08	1800	1/07/2010	191	682	111			1164	325	613	17
ST. LEON CREEK	2B08P	1800	1/1/2010	N/A	446	82	352	532	637	221	569	13
KOCH CREEK	2B07	1860	1/07/2010	Not Sampled					452	170	365	15
EAST CREEK	2D08P	2030	1/1/2010	N/A	450	96	326	562	858	206	470	28

EAST KOOTENAY Drainage Basin

Snow Course Name and Number	Elev. metres	Date of Survey	Jan 2010			Historic, Water Equivalent (mm)					Yrs of Record	
			Snow Depth cm	Water Equiv. mm	% of Normal	2009 mm	2008 mm	Max. mm	Min. mm	Normal mm		
BANFIELD MOUNTAIN	MT05P	1710	1/1/2010	66	137	72	165	203	340	112	190*	12
MOUNT JOFFRE	2C16	1750	12/29/2009	67	175	97	86	152	364	73	180	22
MORRISSEY RIDGE	2C09Q	1800	1/1/2010	N/A	278	84	206	262	706	123	331	26
MOYIE MOUNTAIN	2C10P	1930	1/1/2010	53	163	91	173	147	354	76	180	30
HAWKINS LAKE	MT06P	1970	1/1/2010	102	254	100	201	272	419	145	253*	12
THUNDER CREEK	2C17	2010	12/29/2009	59	143	106	79	88	276	61	135	24
FLOE LAKE	2C14	2090	12/29/2009	127	404	95	277	418	747	181	425	25
FLOE LAKE	2C14P	2090	1/1/2010	205	383	106	326	386	502	173	363	14
HIGHWOOD SUMMIT (BUSH)	AL02	2210	12/29/2009	86	249	119	124	144	399	97	209*	17
MOUNT ASSINIBOINE	2C15	2230	12/29/2009	95	280	97	205	249	567	111	290	26
SUNSHINE VILLAGE	AL05	2230	12/31/2009	109	291	115	232	295	389	137	252*	13

WEST KOOTENAY Drainage Basin

Snow Course Name and Number	Elev. metres	Date of Survey	Jan 2010			Historic, Water Equivalent (mm)					Yrs of Record	
			Snow Depth cm	Water Equiv. mm	% of Normal	2009 mm	2008 mm	Max. mm	Min. mm	Normal mm		
FERGUSON	2D02	880	12/30/2009	107	290	105	191	301	409	93	275	30
NELSON	2D04	930	12/31/2009	56	151	86	152	143	366	61	175	50
CHAR CREEK	2D06	1310	1/1/2010	99	236	94	215	216	480	110	250	26
BUNCHGRASS MEADOW	WA01P	1520	1/1/2010	122	302	95	256	315	488	218	318*	12
KOCH CREEK	2B07	1860	1/07/2010	Not Sampled					452	170	365	15
MOUNT TEMPLEMAN	2D09	1860	1/07/2010	Not Sampled					902	277	530	18
EAST CREEK	2D08P	2030	1/1/2010	N/A	450	96	326	562	858	206	470	28
REDFISH CREEK	2D14P	2104	1/1/2010	N/A	611	113	357	713	721	357	562*	8

KETTLE Drainage Basin

Snow Course Name and Number	Elev. metres	Date of Survey	Jan 2010			Historic, Water Equivalent (mm)					Yrs of Record	
			Snow Depth cm	Water Equiv. mm	% of Normal	2009 mm	2008 mm	Max. mm	Min. mm	Normal mm		
FARRON	2B02A	1220	1/6/2010	70	148	95	152	126	330	40	155	25
MONASHEE PASS	2E01	1370	1/07/2010	70	169	102	158	137	239	84	165	26
GRANO CREEK	2E07P	1860	1/1/2010	83	180	77	169	191	315	143	227*	12

OKANAGAN Drainage Basin

Snow Course Name and Number	Elev. metres	Date of Survey	Jan 2010			Historic, Water Equivalent (mm)					Yrs of Record	
			Snow Depth cm	Water Equiv. mm	% of Normal	2009 mm	2008 mm	Max. mm	Min. mm	Normal mm		
SUMMERLAND RESERVOIR	2F02	1280	12/29/2009	39	82	72	69	99	198	42	114	46
BRENDA MINE	2F18P	1460	1/1/2010	N/A	151	84		174	304	100	186	14
ISINTOK LAKE	2F11	1680	12/30/2009	29	58	67	53	52	196	16	86	44
MISSION CREEK	2F05P	1780	1/1/2010	77	205	95	173	191A	364	104	215	39
GRAYSTOKE LAKE	2F04	1810	1/9/2010	50B	108B	66	118		278	96	165*	6
MOUNT KOBAN	2F12	1810					94	72	261	28	144	33

SIMILKAMEEN Drainage Basin

Snow Course Name and Number	Elev. metres	Date of Survey	Jan 2010			Historic, Water Equivalent (mm)					Yrs of Record	
			Snow Depth cm	Water Equiv. mm	% of Normal	2009 mm	2008 mm	Max. mm	Min. mm	Normal mm		
MISSEZULA MOUNTAIN	2G05	1550				39	96	197	21	99*	17	
ISINTOK LAKE	2F11	1680	12/30/2009	29	58	67	53	52	196	16	86	44
BLACKWALL PEAK	2G03P	1940	1/1/2010	150	416	108	221	398	923	108	397	40
HARTS PASS	WA09P	1980	1/1/2010	135	384	84	322	500	737P	234	457*	12

SOUTH COASTAL Drainage Basin

Snow Course Name and Number	Elev. metres	Date of Survey	Jan 2010			Historic, Water Equivalent (mm)					Yrs of Record	
			Snow Depth cm	Water Equiv. mm	% of Normal	2009 mm	2008 mm	Max. mm	Min. mm	Normal mm		
PALISADE LAKE	3A09P	880	1/1/2010	39	176	29		561	785	337	615*	5
DOG MOUNTAIN	3A10	1080	12/29/2009	117	548	114	360A	687	897	96	480	23
GROUSE MOUNTAIN	3A01	1100	12/29/2009	129	536	112	370A	740	878	24	480	29
ORCHID LAKE	3A19	1190	1/6/2010	232	925	123		901	1360	202	750	25
ORCHID LAKE	3A19P	1178	1/1/2010	206	592	78	357	741	1306	243	760	21
SQUAMISH RIVER (UPPER)	3A25P	1340	1/1/2010	243	792	108	416	671	1072	416	730	18
NOSTETUKO RIVER	3A22P	1500	1/1/2010	48	281	106		264A	524	32	256*	17
MOSLEY CREEK (UPPER)	3A24P	1650	1/1/2010	72	258	142	203	188A	491	85	189*	21

VANCOUVER ISLAND Drainage Basin

Snow Course Name and Number	Elev. metres	Date of Survey	Jan 2010			Historic, Water Equivalent (mm)					Yrs of Record	
			Snow Depth cm	Water Equiv. mm	% of Normal	2009 mm	2008 mm	Max. mm	Min. mm	Normal mm		
ELK RIVER	3B04	270	1/3/2010	0	0	0	109	112	264	0	70	25
WOLF RIVER (LOWER)	3B19	640	1/3/2010	73	196	196	154	282	372	0	100	20
WOLF RIVER (MIDDLE)	3B18	1070	1/3/2010	110	336	124	168	336	590	0	270	21
FORBIDDEN PLATEAU	3B01	1130	1/3/2010	199	701	111	299	1162	1287	0	630	27
JUMP CREEK	3B23P	1160	1/1/2010	99	430	100	304	499	1024	60	428	14
WOLF RIVER (UPPER)	3B17P	1490	1/1/2010	N/A	610	103	265	594	1057	150	595	21

NORTH COASTAL Drainage Basin

Snow Course Name and Number	Elev. metres	Date of Survey	Jan 2010			Historic, Water Equivalent (mm)					Yrs of Record	
			Snow Depth cm	Water Equiv. mm	% of Normal	2009 mm	2008 mm	Max. mm	Min. mm	Normal mm		
TAHTSA LAKE	1B02P	1300	1/1/2010	N/A	701	100	652	628	1155	369	703	17
BURNT BRIDGE CREEK	3C08P	1330	1/1/2010	N/A	480	114	525A	484A	611	131	442*	11

SKAGIT Drainage Basin

Snow Course Name and Number	Elev. metres	Date of Survey	Jan 2010			Historic, Water Equivalent (mm)					Yrs of Record	
			Snow Depth cm	Water Equiv. mm	% of Normal	2009 mm	2008 mm	Max. mm	Min. mm	Normal mm		
BEAVER PASS	WA12	1120	1/1/2010	132	378	121		338	615	109	312*	12
KLESILKWA	3D03A	1130	12/28/2009	26	84	45		144	386	0	185	18
HARTS PASS	WA09P	1980	1/1/2010	135	384	84	322	500	737P	234	457*	12

PEACE Drainage Basin

Snow Course Name and Number	Elev. metres	Date of Survey	Jan 2010			Historic, Water Equivalent (mm)					Yrs of Record	
			Snow Depth cm	Water Equiv. mm	% of Normal	2009 mm	2008 mm	Max. mm	Min. mm	Normal mm		
PACIFIC LAKE	1A11	770	1/2/2010	134	381	123	287	306	476	56	310	26
BULLHEAD MOUNTAIN	4A28	790					N/A	N/A	126	0	54	24
WARE (LOWER)	4A04	980	1/4/2010	48	80	80	116	106	240	52	100	19
PHILIP LAKE	4A13	980	1/6/2010	69	139	93	132	175	288	48	150	27
AIKEN LAKE	4A30P	1040	1/1/2010	N/A	120	87	150	116A	262	71	138	20
TUTIZZI LAKE	4A06	1070	1/6/2010	55	103	76	138	113	200	72	135	19
TSAYDAYCHI LAKE	4A12	1160	1/6/2010	84	199	93	182	248	393	128	215	26
KAZA LAKE	1A12	1190	1/6/2010	55	92	48	192	174	371	108	190	24
PULPIT LAKE	4A09	1310	1/4/2010	69	167	76	324	263	398	130	220	21
PULPIT LAKE	4A09P	1310	1/1/2010	N/A	167E	69	351	262	351	155	242	18
FREDRICKSON LAKE	4A10	1310	1/5/2010	49	77	59	132	125	250	54	130	20
PINE PASS	4A02	1399	1/2/2010	194	655	106	1700	755	1700	314	620	27
PINE PASS	4A02P	1400	1/1/2010	N/A	509	94		585	1016	241	543	19
TRYGVE LAKE	4A11	1400	1/4/2010	67	143	73	238		299	126	195	21
SIKANNI LAKE	4C01	1400	1/4/2010	49	85	59	191	137	257	44	145	26
MORFEE MOUNTAIN	4A16	1450	1/2/2010	131	395	88	416	462	710	199	450	14
LADY LAURIER LAKE	4A07	1460	1/3/2010	91	229	85	292	343	472	140	270	25
MOUNT SHEBA	4A18	1490	1/2/2010	168	559	140	377	494	793	106	400	21
GERMANSEN (UPPER)	4A05	1500	1/6/2010	71	173	89	194		364	93	194	26
MOUNT STEARNS	4A21	1500	1/3/2010	45	73	91	97	72	151	14	80	20
JOHANSON LAKE	4B02	1540	1/5/2010	58	103	64	172	132	282	84	160	26
MONKMAN CREEK	4A20	1550	1/1/2010	129	391	145	225		546	107	270	15
WARE (UPPER)	4A03	1570	1/4/2010	55	102	70	163	153	248	64	145	20
KWADACHA RIVER	4A27P	1620	1/1/2010	N/A	143	89	176	176	307	86	173*	23

LIARD Drainage Basin

Snow Course Name and Number	Elev. metres	Date of Survey	Jan 2010			Historic, Water Equivalent (mm)					Yrs of Record	
			Snow Depth cm	Water Equiv. mm	% of Normal	2009 mm	2008 mm	Max. mm	Min. mm	Normal mm		
SIKANNI LAKE	4C01	1400	1/4/2010	49	85	59	191	137	257	44	145	26

SKEENA/NASS Drainage Basin

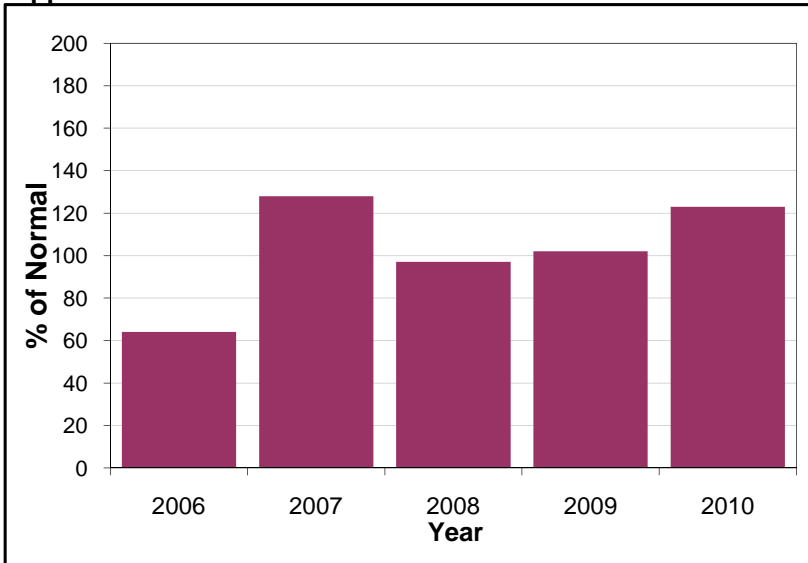
Snow Course Name and Number	Elev. metres	Date of Survey	Jan 2010			Historic, Water Equivalent (mm)					Yrs of Record	
			Snow Depth cm	Water Equiv. mm	% of Normal	2009 mm	2008 mm	Max. mm	Min. mm	Normal mm		
CEDAR-KITEEN	4B18P	885	1/1/2010	N/A	201	69	473	319	521	83	295*	9
KAZA LAKE	1A12	1190	1/6/2010	55	92	48	192	174	371	108	190	24
LU LAKE	4B15P	1310	1/1/2010	34	135	101	160	161	289	41	134*	12
TSAI CREEK	4B17P	1360	1/1/2010	153	592	103	654	694	908	390	589*	11
TRYGVE LAKE	4A11	1400	1/4/2010	67	143	73	238		299	126	195	21
HUDSON BAY MTN.	4B03A	1480	1/4/2010	86	261	92	290	291	470	135	283	34
SHEDIN CREEK	4B16P	1480	1/1/2010	89	326	79	530	443	551	266	419*	13
JOHANSON LAKE	4B02	1540	1/5/2010	58	103	64	172	132	282	84	160	26

STIKINE/TAKU Drainage Basin

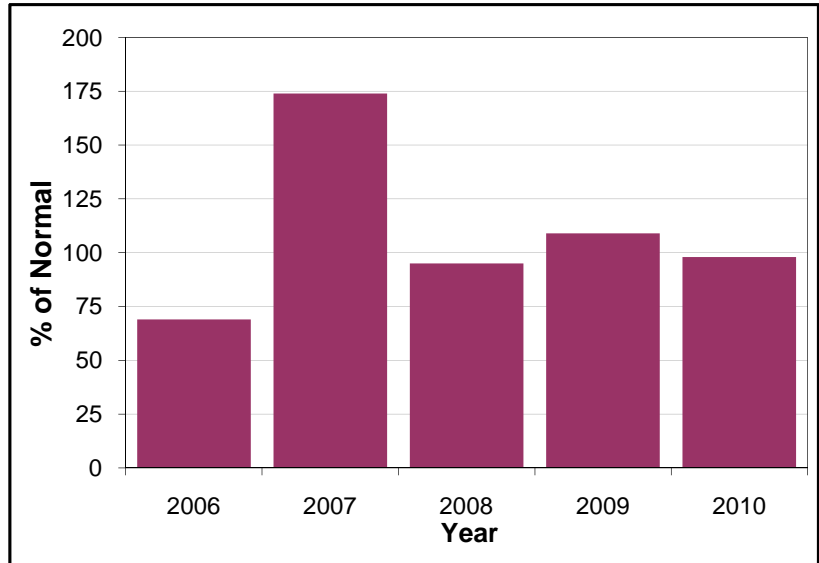
Snow Course Name and Number	Elev. metres	Date of Survey	Jan 2010			Historic, Water Equivalent (mm)					Yrs of Record	
			Snow Depth cm	Water Equiv. mm	% of Normal	2009 mm	2008 mm	Max. mm	Min. mm	Normal mm		
<i>NOTE: No Surveys currently done in this basin.</i>												
A - SAMPLING PROBLEMS WERE ENCOUNTERED												
B - EARLY OR LATE SAMPLING												
C - EARLY OR LATE SAMPLING WITH PROBLEMS ENCOUNTERED												
E - ESTIMATED BASED ON AREAL AVERAGE												
* - PERIOD OF RECORD AVERAGE												

Snow Basin Index Graphs - January 1, 2010

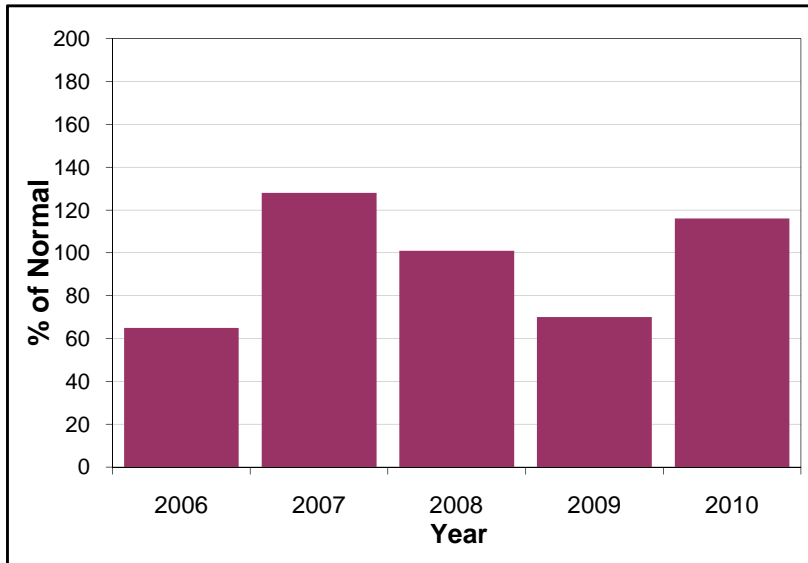
Upper Fraser



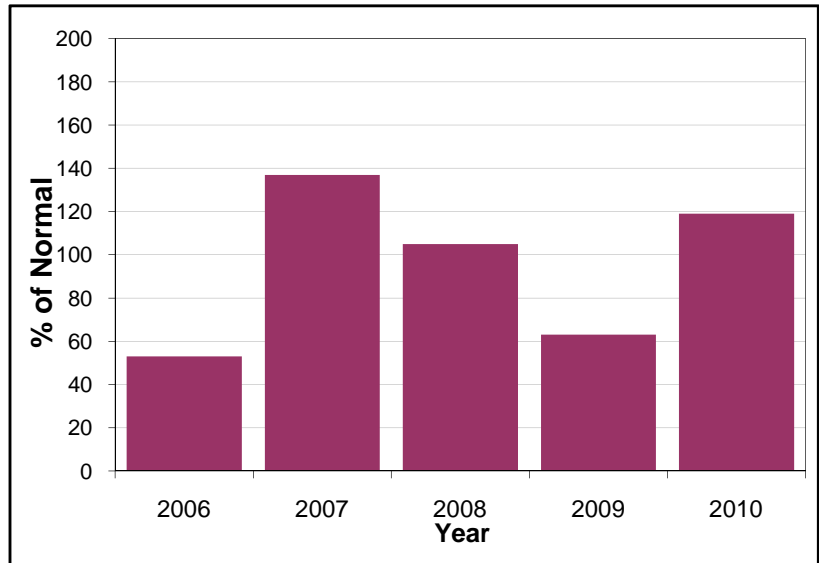
Nechako



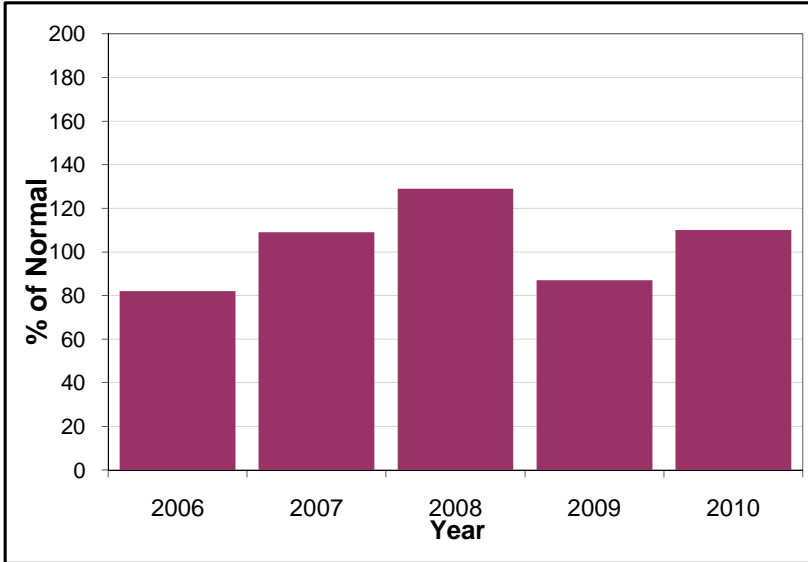
Middle Fraser



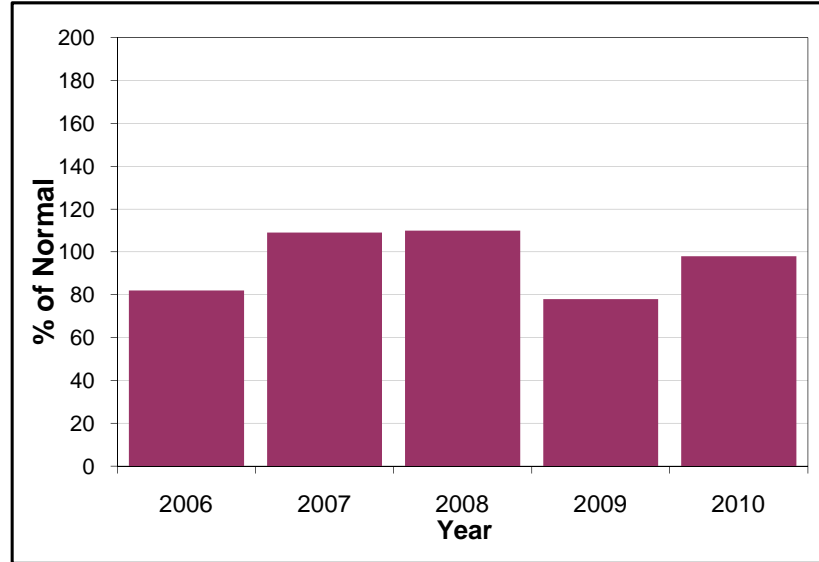
Lower Fraser



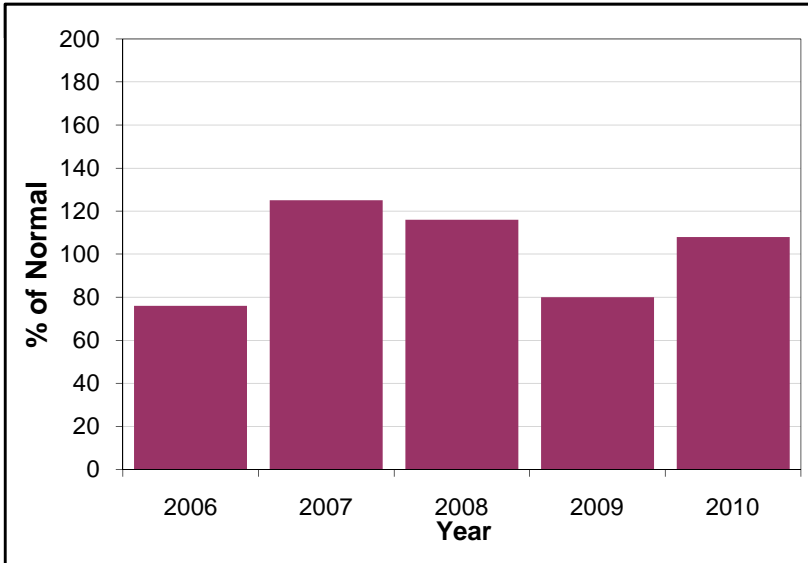
North Thompson



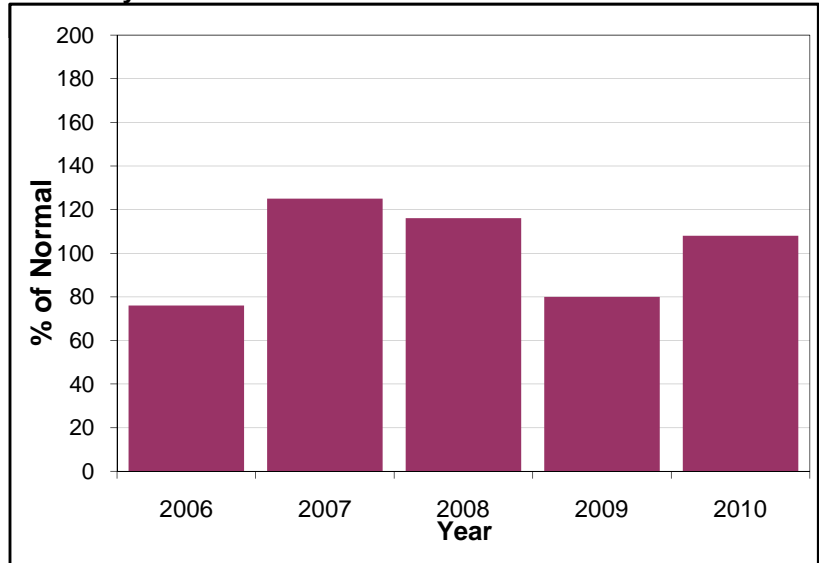
South Thompson



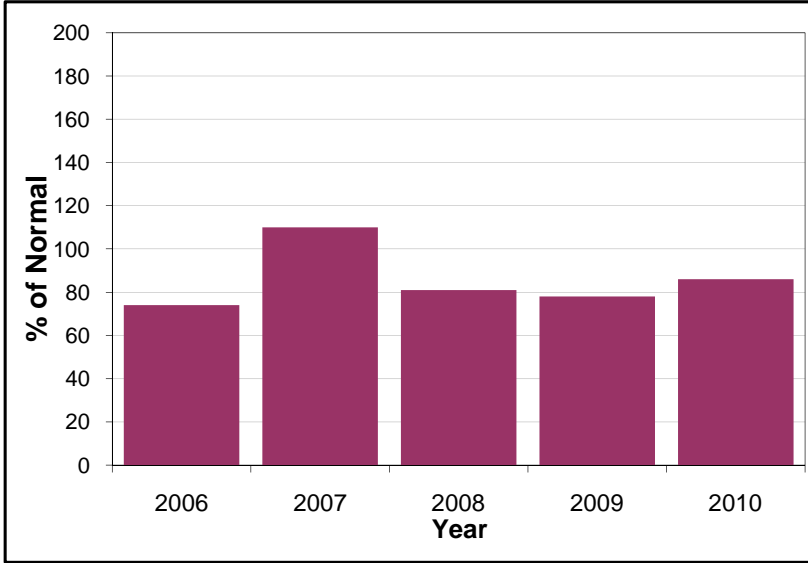
Columbia



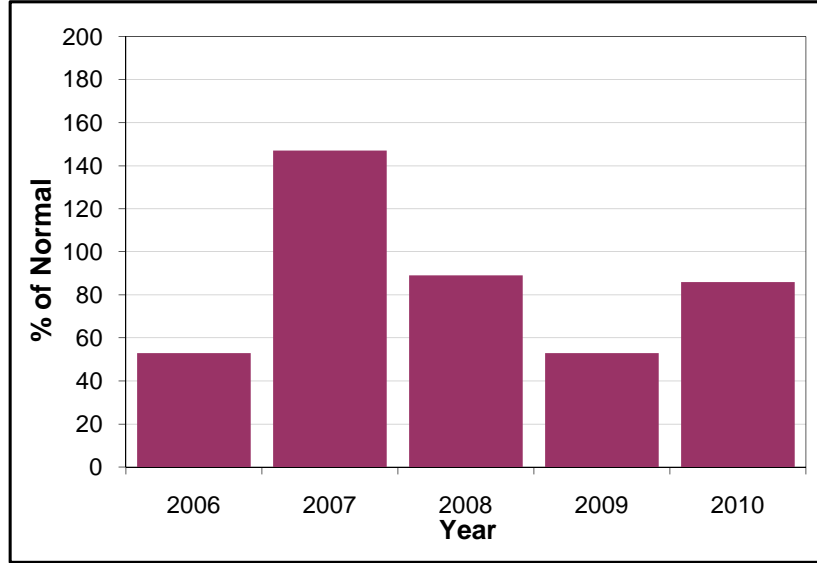
Kootenay



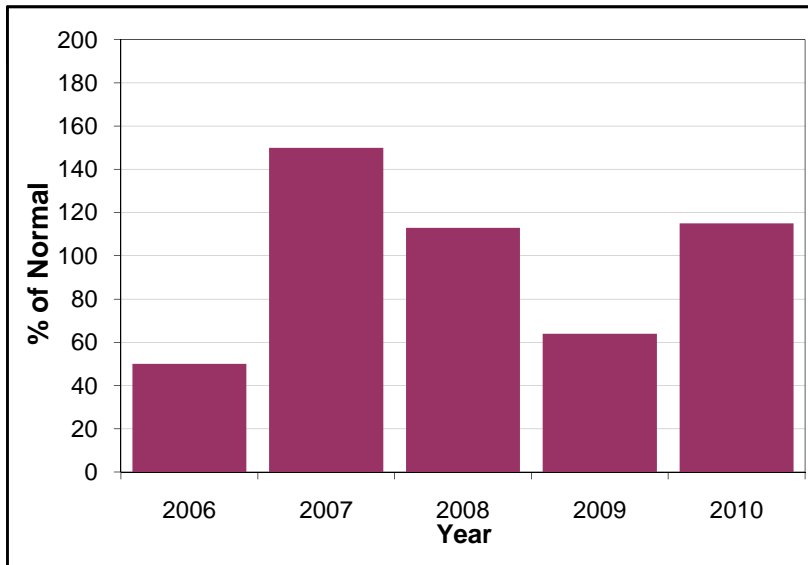
Okanagan-Kettle



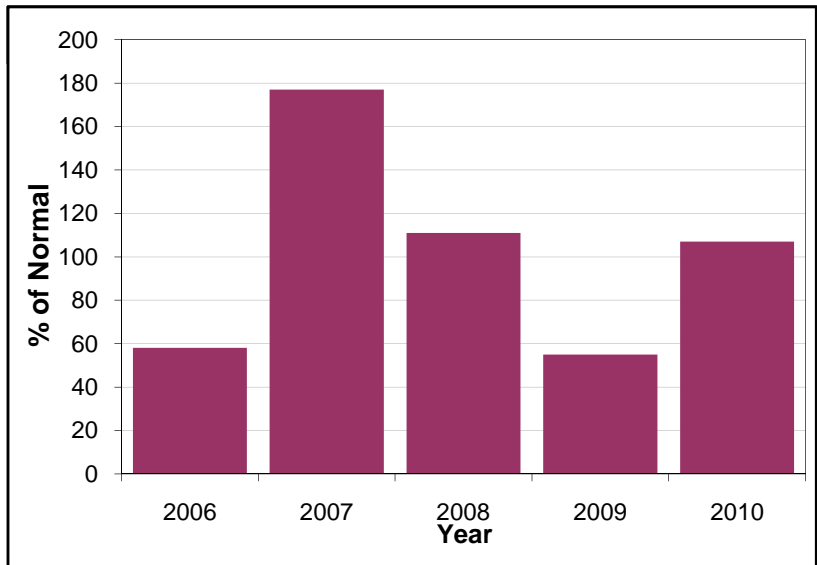
Similkameen



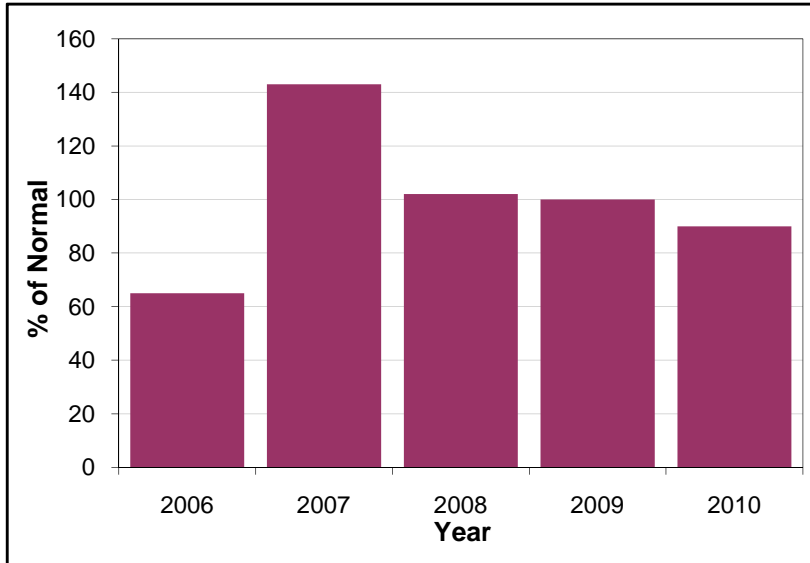
South Coast



Vancouver Island



Peace



Skeena-Nass

