



Snow Survey and Water Supply Bulletin – May 15th, 2015

The May 15th snow survey is now complete. Data from 27 snow courses and 49 snow pillows around the province and climate data from Environment Canada have been used to form the basis for the following report¹.

Weather

The first week in May saw a cold low pressure system move across British Columbia, bringing cooler temperatures and scattered precipitation. Into the second week of the month, a blocking high pressure ridge developed over northern BC and this pattern has largely persisted. This has brought extremely warm, summer-like temperatures across the northern portions of the province (20-25 °C) and warm conditions through other areas. Thunderstorms over the period have been the primary source of precipitation through the month, leading to sporadic and localized rain events. Wide-spread rainfall has been limited in May.

Snow Pack

Warm weather through early May has led to rapid snow melt across the province. Most snow survey locations across the province experienced 50-200 mm of snow water equivalent loss over the May 1st to May 15th period. Current melt rates at snow pillows range from 5-25mm/day through most of the province, with some regions experiencing up to 30-40mm/day of melt.

May 15th snow basin indices have declined through most of the province since May 1st, and range from a low of 11% of normal in the South Coast and Vancouver Island, to a high of 122% of normal in the Nechako. May 15th snow basin indices have increased since May 1st in the Upper Fraser-East, Nechako, Lower Fraser, Upper Columbia, Boundary, and Central Coast.

Most regions of the province have extremely low May 15th snow basin indices (<49% of normal) (Figure 1). This includes the Middle Fraser, Lower Fraser, East Kootenay, Okanagan, Similkameen, South Coast, Vancouver Island and Peace. Below normal snow basin indices (50-79%) are present in the Boundary, South Thompson, West Kootenay and Stikine. Slightly below normal (80-89%) basin indices are present in the North Thompson, Upper Columbia, and Central Coast. Near normal (90-109%) snow basin indices are present in the Upper Fraser and Skeena-Nass basins. Above normal (>120%) snow pack conditions are present in the Nechako basin.

The average of all provincial snow water equivalent measurements for May 15th is 60% of average conditions. This is the lowest province-wide average for the May 15th bulletin in the past 31 years of record.

The extremely low snow pack this season is the result of warm winter and spring temperatures that have led to a higher than normal portion of the winter precipitation falling as rain rather than snow and high rates of early season melt.

1. Every effort is made to ensure that data reported on these pages are accurate. However, in order to update the graphs and indices as quickly as possible, some data may have been estimated. Please note that data provided on these pages are preliminary and subject to revision upon review.

Snow Survey and Water Supply Bulletin – May 15th, 2015

Table 1 - BC Snow Basin Indices – May 15, 2015

Basin	% of Normal	Basin	% of Normal
Upper Fraser West	No Data ¹	Boundary	70
Upper Fraser East	103	Similkameen	29
Nechako	122	South Coast	11
Middle Fraser	41	Vancouver Island	11
Lower Fraser	37	Central Coast	83
North Thompson	86	Skagit	No Data ¹
South Thompson	73	Peace	47
Upper Columbia	86	Skeena-Nass	91
West Kootenay	55	Stikine	70
East Kootenay	24	Liard	No Data ¹
Okanagan	41	Northwest	No Data ¹

¹ Data is not available either because there were no scheduled snow surveys or no snow surveys were completed.

Streamflow Runoff

Many rivers across the province experienced much higher than normal streamflow over the late-winter and spring period. This was a result of increased runoff due to winter and spring precipitation as rain and rapid early season snow melt.

In some regions of the province, particularly where there is still significant high-elevation snow packs remaining, streamflows remain above normal as unseasonably hot temperatures have been driving rapid snow melt. In unregulated streams in the Nechako River basin, for example, flow rates are currently at 5-year to 50-year return period flow levels.

In the southern part of the province, particularly on Vancouver Island, the depletion of this seasons' marginal snow pack has transitioned rivers to extremely low levels for this time of year. Flow conditions in mid-May this year are more similar to what is observed in July or August in an average year and is an early indication that there is a risk of extreme low flows this season if the region does not experience wetter than normal summer weather.

Snow packs are still sufficient across some regions of the province to provide on-going seasonal risk for flooding. This is the case for regions that typically experience peak levels later in the melt season, including the Fraser River and Thompson River.

Outlook

Current weather patterns are persistent, with a blocking ridge over northern British Columbia leading to limited flow of upper air and continued hot weather with some



Snow Survey and Water Supply Bulletin – May 15th, 2015

instability and thundershowers. This pattern is expected to continue through the weekend and into next week, with persistent above-normal temperatures. Current long-range temperature forecasts from Environment Canada indicate a high likelihood of above normal temperatures across British Columbia through the short (1 month) and long (3-month) terms. Precipitation forecasts, which are less reliable than temperature, suggest normal precipitation over the next three months, with the exception of the eastern third of the province that may experience above normal precipitation.

Flooding is always possible during the snow melt freshet season, even in areas with normal or lower than normal snow packs. Given the snow conditions this year for most of the province, extreme weather, such as extreme precipitation or combined hot and wet weather, would be required to produce flooding or higher than expected flows in most areas of the province.

In the Nechako and Bulkley Rivers, snow packs are nearing a point where flows on natural systems are expected to peak within the coming week. On the Nechako River near the confluence with the Fraser, the peak is expected to occur later as flows from the Stuart River are forecast to continue to rise. In the larger rivers of the province, warmer weather over the next 5-10 days is expected to continue the on-going rapid snow melt, and steady rises in river levels are expected.

With current weather conditions and outlook, the low flow season is expected to begin early this season. The extent of low flows will largely be affected by late-spring and summer temperature and precipitation. However, with the shift to earlier season low flows, there is the potential for very low summer flows in some regions unless wetter than normal summer weather occurs.

The River Forecast Centre will continue to monitor snow pack conditions and streamflow across the province and provide flood and low streamflow advisories as needed. Snow melt “Freshet” information, including stream flow mapping, is available at:

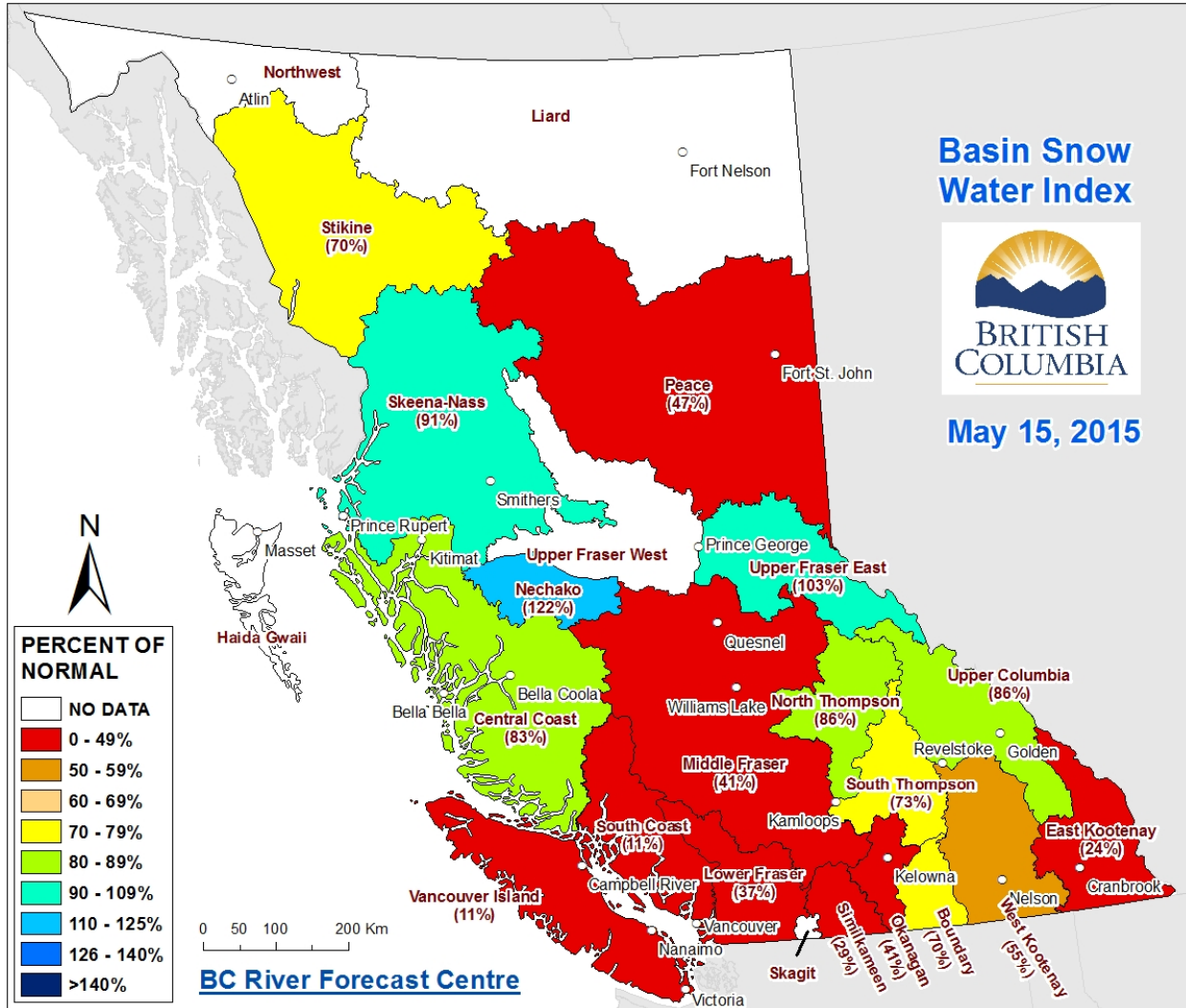
<http://bcRFC.env.gov.bc.ca/freshet/index.htm>. The next Snow Survey and Water Supply Bulletin is scheduled for release on Monday, June 8th.

BC River Forecast Centre
May 21, 2015



Snow Survey and Water Supply Bulletin – May 15th, 2015

Figure 1: Basin Snow Water Index Map – May 15th, 2015



1. Every effort is made to ensure that data reported on these pages are accurate. However, in order to update the graphs and indices as quickly as possible, some data may have been estimated. Please note that data provided on these pages are preliminary and subject to revision upon review.

2015 Automated Snow Pillow/Manual Snow Survey Data			May 15th						Historic Snow Water Equivalent (mm)					
Station ID	Name	Basin	Elevation (masl)	Survey Date YYYY-MM-DD	SD (cm)	SWE (mm)	Code	SWE % 1981-2010 Normal	2014 SWE (mm)	2013 SWE (mm)	Minimum (mm)	Maximum (mm)	1981-2010 Normal (mm)	Years of Record
1A01P	YELLOWHEAD LAKE	Upper Fraser East	1847	2014-05-15	97	481		92%	586	457	143	833	522	16
1A02P	MC BRIDE (UPPER)	Upper Fraser East	1608	2014-05-15	99	428		106%	536	353	65	656	403	21
1A03P	BARKERVILLE	Upper Fraser East	1483	2014-05-15	0	12		6%	363	136	0	503	213	38
1A05	LONGWORTH (UPPER)	Upper Fraser East	1693	NS					NS	NS	292	1219	798	55
1A06A	HANSARD	Upper Fraser East	622	NS					NS	NS	NA	NA	0	0
1A10	PRINCE GEORGE A	Upper Fraser East	684	NS					NS	NS	0	76	5	23
1A11	PACIFIC LAKE	Upper Fraser East	756	NS					NS	NS	0	728	339	35
1A12	KAZA LAKE	Upper Fraser West	1247	NS					NS	NS	212	212	212	1
1A14P	HEDRICK LAKE	Upper Fraser East	1118	2014-05-15	97	338	E	45%	1307	1139	435	1277	754	13
1A15	KNUDSEN LAKE	Upper Fraser East	1598	NS					NS	NS	359	1271	836	34
1A16	BURNS LAKE	Upper Fraser West	820	NS					NS	NS	0	0	0	17
1A17P	REVOLUTION CREEK	Upper Fraser East	1676	2014-05-15	205	785		110%	1247	913	228	1307	716	28
1A19P	DOME MOUNTAIN	Upper Fraser East	1768	2014-05-15	168	810		98%	1039	859	555	1215	828	7
1A23	BIRD CREEK	Upper Fraser West	1196	NS					NS	NS	0	0	0	1
1B01	MOUNT WELLS	Nechako	1489	NS					NS	NS	164	869	280	3
1B01P	MOUNT WELLS	Nechako	1489	2014-05-15	N/A	696		142%	418	317	171	946	491	21
1B02	TAHTSA LAKE	Nechako	1319	NS					NS	NS	924	1687	924	2
1B02P	TAHTSA LAKE	Nechako	1319	2014-05-15	N/A	1217		95%	818	733	674	2340	1287	21
1B05	SKINS LAKE	Nechako	877	NS					NS	NS	0	0	0	2
1B06	MOUNT SWANNELL	Nechako	1596	NS					NS	NS	0	331	166	2
1B07	NUTLI LAKE	Nechako	1502	NS					NS	NS	197	197	197	1
1B08P	MOUNT PONDOSY	Nechako	1413	2014-05-15	N/A	815		130%	314	264	216	1198	628	21
1C01	BROOKMERE	Middle Fraser	994	NS					NS	NS	0	208	22	28
1C05	MCGILLIVRAY PASS	Middle Fraser	1715	NS					NS	NS	184	965	455	20
1C06	PAVILION	Middle Fraser	1209	NS					NS	NS	0	0	0	6
1C08	NAZKO	Middle Fraser	1029	NS					NS	NS	NA	NA	NA	NA
1C09A	HIGHLAND VALLEY	Middle Fraser	1547	NS					NS	NS	0	30	3	25
1C12P	GREEN MOUNTAIN	Middle Fraser	1766	2014-05-15	N/A	583		73%	536	514	424	1369	803	19
1C13A	HORSEFLY MOUNTAIN	Middle Fraser	1612	NS					NS	NS	655	655	655	1
1C14	BRALORNE	Middle Fraser	1382	NS					NS	NS	0	80	11	20
1C17	MOUNT TIMOTHY	Middle Fraser	1632	NS					NS	NS	0	466	181	42
1C18P	MISSION RIDGE	Middle Fraser	1903	2014-05-15	N/A	124		37%	330	345	0	972	336	43
1C19	GNAWED MOUNTAIN	Middle Fraser	1617	NS					NS	NS	0	157	23	22
1C20P	BOSS MOUNTAIN MINE	Middle Fraser	1477	2014-05-15	40	215		47%	417	368	176	746	455	19
1C21	BIG CREEK	Middle Fraser	1130	NS					NS	NS	NA	NA	NA	NA
1C22	PUNTZI MOUNTAIN	Middle Fraser	939	NS					NS	NS	0	0	NA	2
1C23	PENFOLD CREEK	Middle Fraser	1687	NS					NS	1078	585	1400	1022	44
1C25	LAC LE JEUNE (UPPER)	Middle Fraser	1471	NS					NS	NS	0	67	22	5
1C28	DUFFEY LAKE	Middle Fraser	1253	NS					NS	NS	NA	NA	NA	NA

2015 Automated Snow Pillow/Manual Snow Survey Data			May 15th						Historic Snow Water Equivalent (mm)					
Station ID	Name	Basin	Elevation (masl)	Survey Date YYYY-MM-DD	SD (cm)	SWE (mm)	Code	SWE % 1981-2010 Normal	2014 SWE (mm)	2013 SWE (mm)	Minimum (mm)	Maximum (mm)	1981-2010 Normal (mm)	Years of Record
1C29	SHOVELNOSE MOUNTAIN	Middle Fraser	1456	NS					NS	NS	NA	NA	NA	NA
1C32	DEADMAN RIVER	Middle Fraser	1463	NS					NS	NS	NA	NA	NA	NA
1C33A	GRANITE MOUNTAIN	Middle Fraser	1175	NS					NS	NS	NA	NA	NA	NA
1C37	BRALORNE(UPPER)	Middle Fraser	1980	NS					NS	NS	NA	NA	NA	NA
1C38	DOWNTON LAKE (UPPER)	Middle Fraser	1884	NS					NS	NS	NA	NA	NA	NA
1C39	BRIDGE GLACIER (LOWER)	Middle Fraser	1393	NS					NS	NS	NA	NA	NA	NA
1C40	TYAUGHTON CREEK (NORTH)	Middle Fraser	1946	NS					NS	NS	NA	NA	NA	NA
1C41P	YANKS PEAK, EAST	Middle Fraser	1683	2014-05-15	125	750		97%	1183	843	386	1129	774	16
1C42	CAVERHILL LAKE NEW	Middle Fraser	N/A	NS					NS					
1D06P	TENQUILLE LAKE	Lower Fraser	1669	2014-05-15	220	727		75%	692	754	469	1693	973	12
1D08	STAVE LAKE	Lower Fraser	1211	NS					NS	NS	2438	2438	NA	1
1D09	WAHLEACH LAKE	Lower Fraser	1395	NS					NS	NS	102	656	428	10
1D09P	WAHLEACH LAKE	Lower Fraser	1408	2014-05-15	N/A	300		30%	940	1097	310	1793	1001	21
1D10	NAHATLATCH RIVER	Lower Fraser	1530	NS					NS	NS	1202	2423	1467	4
1D16	DICKSON LAKE	Lower Fraser	1147	NS					NS	NS	2070	2070	2070	1
1D17P	CHILLIWACK RIVER	Lower Fraser	1621	2014-05-15	91	529		38%	2200	1777	405	2540	1398	21
1D19P	SPUZZUM CREEK	Lower Fraser	1197	2014-05-15	0	0			1434	1646	49	2900	1533	14
1E01B	BLUE RIVER	North Thompson	673	NS					NS	NS	0	213	N/A	11
1E02P	MOUNT COOK	North Thompson	1574	2014-05-15	198	1096		82%	1328	1353	855	1793	1334	13
1E03A	TROPHY MOUNTAIN	North Thompson	1907	NS					697	637	301	1114	618	32
1E05	KNOUFF LAKE	North Thompson	1189	NS					NS	NS	NA	NA	NA	NA
1E07	ADAMS RIVER	North Thompson	1769	2015-05-19	97	451		65%	785	684	280	1158	690	43
1E08P	AZURE RIVER	North Thompson	1625	2014-05-15	195	1274		111%	1006	1398	746	1684	1152	16
1E10P	KOSTAL LAKE	North Thompson	1760	2014-05-15	163	754		87%	883	922	569	1358	870	28
1F01A	ABERDEEN LAKE	South Thompson	1262	NS					NS	NS	0	28	14	11
1F02	ANGLEMONT	South Thompson	1168	NS					113	NS	0	361	99	20
1F03P	PARK MOUNTAIN	South Thompson	1857	2014-05-15	161	827		89%	1145	1009	315	1358	929	28
1F04	ENDERBY	South Thompson	1948	NS					1247	1183	662	1499	1072	51
1F06P	CELISTA MOUNTAIN	South Thompson	1533	2014-05-15	118	659		78%	1044	1021	420	1163	841	8
2A01A	CANOE RIVER	Upper Columbia	866	NS					NS	NS	0	0	0	5
2A02	GLACIER	Upper Columbia	1249	NS					NS	NS	114	1034	498	47
2A03A	FIELD	Upper Columbia	1310	NS					NS	NS	0	0	0	3
2A06P	MOUNT REVELSTOKE	Upper Columbia	1770	2014-05-15	N/A	968		78%	1177	1312	700	1777	1235	20
2A07	KICKING HORSE	Upper Columbia	1648	NS					NS	NS	0	521	229	47
2A11	BEAVERFOOT	Upper Columbia	1924	NS					NS	NS	0	399	146	4
2A14	MOUNT ABBOT	Upper Columbia	2031	NS					NS	NS	837	1944	1319	37
2A16	GOLDSTREAM	Upper Columbia	1914	NS					NS	NS	1055	1055	1055	1
2A17	FIDELITY MOUNTAIN	Upper Columbia	1852	NS					NS	NS	837	1950	1271	33
2A18	KEYSTONE CREEK	Upper Columbia	1839	NS					NS	NS	683	683	683	1

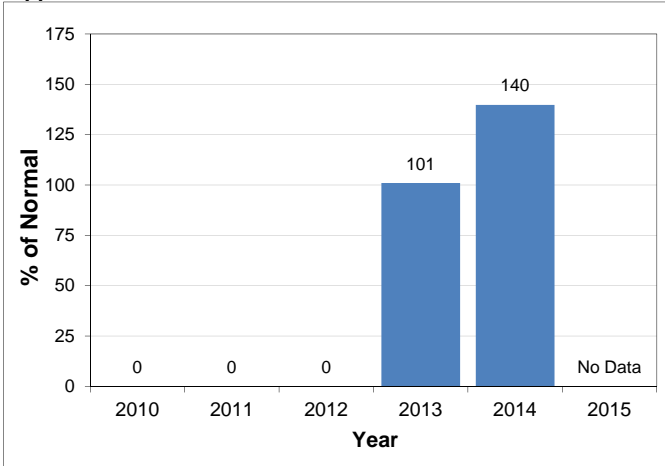
2015 Automated Snow Pillow/Manual Snow Survey Data			May 15th						Historic Snow Water Equivalent (mm)					
Station ID	Name	Basin	Elevation (masl)	Survey Date YYYY-MM-DD	SD (cm)	SWE (mm)	Code	SWE % 1981-2010 Normal	2014 SWE (mm)	2013 SWE (mm)	Minimum (mm)	Maximum (mm)	1981-2010 Normal (mm)	Years of Record
2A19	VERMONT CREEK	Upper Columbia	1533	NS					NS	NS	225	813	225	2
2A21P	MOLSON CREEK	Upper Columbia	1930	2014-05-15	N/A	1009		93%	1091	1167	602	1707	1085	32
2A22	SUNBEAM LAKE	Upper Columbia	2066	NS					NS	NS	863	863	863	1
2A23	BUSH RIVER	Upper Columbia	1982	NS					NS	NS	766	766	766	1
2A25	KIRBYVILLE LAKE	Upper Columbia	1739	NS					NS	NS	1130	1257	1194	2
2A27	DOWNIE SLIDE (LOWER)	Upper Columbia	964	NS					NS	NS	0	522	297	9
2A29	DOWNIE SLIDE (UPPER)	Upper Columbia	1628	NS					NS	NS	582	1425	1284	9
2B02A	FARRON	West Kootenay	1229	2015-05-13	0	0			25	0	0	222	63	34
2B05	WHATSHAN (UPPER)	West Kootenay	1476	NS					NS	NS	164	737	164	3
2B06	BARNES CREEK	West Kootenay	1598	NS					NS	NS	260	594	260	3
2B06P	BARNES CREEK	West Kootenay	1595	2014-05-15	N/A	321		73%	630	494	98	758	438	20
2B07	KOCH CREEK	West Kootenay	1813	NS					NS	NS	675	1148	675	2
2B08	ST. LEON CREEK	West Kootenay	1828	NS					NS	NS	1218	1218	1218	1
2B08P	ST. LEON CREEK	West Kootenay	1822	2014-05-15	N/A	879		88%	1292	1130	639	1568	1004	20
2B09	RECORD MOUNTAIN	West Kootenay	1906	2015-05-17	23	114		18%	550	366	83	1367	645	39
2C01	SINCLAIR PASS	East Kootenay	1374	NS					NS	NS	0	107	0	22
2C04	SULLIVAN MINE	East Kootenay	1580	2015-05-15	0	0	T		248	0	0	457	80	62
2C07	FERNIE EAST	East Kootenay	1213	2015-05-15	0	0			62	0	0	298	34	52
2C09Q	MORRISSEY RIDGE	East Kootenay	1966	2014-05-15	N/A	95		20%	1079	93	0	1102	484	33
2C10P	MOYIE MOUNTAIN	East Kootenay	1840	2014-05-15	2	0			458	0	0	678	225	34
2C11	KIMBERLEY (UPPER) VOR	East Kootenay	2148	NS					NS	NS	570	570	N/A	1
2C12	KIMBERLEY (MIDDLE) VOR	East Kootenay	1692	NS					NS	NS	44	44	N/A	1
2C14	FLOE LAKE	East Kootenay	2087	NS					NS	NS	733	733	733	1
2C14P	FLOE LAKE	East Kootenay	2110	2014-05-15	N/A	588		78%	923	731	304	1101	752	20
2C15	MOUNT ASSINIBOINE	East Kootenay	2230	NS					NS	NS	534	534	534	1
2C16	MOUNT JOFFRE	East Kootenay	1763	NS					NS	NS	338	338	338	1
2C17	THUNDER CREEK	East Kootenay	2062	NS					NS	NS	220	220	220	1
2C20	VERMILLION RIVER NO. 3	East Kootenay	1612	NS					NS	NS	0	381	N/A	7
2D02	FERGUSON	West Kootenay	929	NS					NS	NS	20	640	302	36
2D03	SANDON	West Kootenay	1072	NS					NS	NS	0	218	N/A	8
2D04	NELSON	West Kootenay	952	NS					NS	NS	0	243	46	41
2D05	GRAY CREEK (LOWER)	West Kootenay	1558	NS					NS	NS	0	709	330	49
2D06	CHAR CREEK	West Kootenay	1290	2015-05-15	0	0			378	212	NA	NA	272	
2D07A	DUNCAN LAKE NO. 2	West Kootenay	662	NS					NS	NS	NA	NA	NA	NA
2D08P	EAST CREEK	West Kootenay	2004	2014-05-15	N/A	865		99%	952	533	461	1387	874	32
2D09	MOUNT TEMPLEMAN	West Kootenay	1879	NS					NS	NS	978	978	978	1
2D10	GRAY CREEK (UPPER)	West Kootenay	1926	NS					NS	NS	311	1194	709	30
2D14P	REDFISH CREEK	West Kootenay	2086	2014-05-15	238	1374		105%	1497	1352	1024	1771	1309	11
2E01	MONASHEE PASS	Boundary	1387	NS					NS	NS	0	363	206	27

2015 Automated Snow Pillow/Manual Snow Survey Data			May 15th						Historic Snow Water Equivalent (mm)					
Station ID	Name	Basin	Elevation (masl)	Survey Date YYYY-MM-DD	SD (cm)	SWE (mm)	Code	SWE % 1981-2010 Normal	2014 SWE (mm)	2013 SWE (mm)	Minimum (mm)	Maximum (mm)	1981-2010 Normal (mm)	Years of Record
2E02	CARMI	Boundary	1254	NS					NS	NS	0	0	N/A	14
2E03	BIG WHITE MOUNTAIN	Boundary	1672	NS					421	297	0	732	366	48
2E06	BLUEJOINT MOUNTAIN	Boundary	1990	NS					NS	NS	NA	NA	NA	NA
2E07P	GRANO CREEK	Boundary	1874	2014-05-15	63	333		64%	582	553	290	881	520	15
2F01A	TROUT CREEK (WEST)	Okanagan	1430	2015-05-12	0	0	T		60	0	0	243	58	4
2F02	SUMMERLAND RESERVOIR	Okanagan	1304	2015-05-15	0	0			NS	0	0	218	13	48
2F03	MC CULLOCH	Okanagan	1266	NS					NS	NS	0	102	0	37
2F04	GRAYSTOKE LAKE	Okanagan	1818	NS					NS	NS	0	742	360	17
2F05P	MISSION CREEK	Okanagan	1794	2014-05-15	66	293		76%	679	469	0	829	386	43
2F07	POSTILL LAKE	Okanagan	1358	NS					NS	NS	71	180	143	7
2F08	GRAYBACK RESERVOIR	Okanagan	1548	2015-05-11	15	55		70%	225	0	0	323	79	43
2F09	WHITEROCKS MOUNTAIN	Okanagan	1789	2015-05-13	36	167		47%	375	439	0	968	357	43
2F10	SILVER STAR MOUNTAIN	Okanagan	1834	2015-05-13	110	424		64%	810	724	100	1054	665	55
2F11	ISINTOK LAKE	Okanagan	1651	2015-05-15	0	0			0	0	0	386	46	48
2F12	MOUNT KOBAU	Okanagan	1817	2015-05-14	17	74		29%	163	379	0	516	253	47
2F13	ESPERON CR (UPPER)	Okanagan	1634	2015-05-10	38	174		57%	NS	310	66	625	306	10
2F14	ESPERON CR (MIDDLE)	Okanagan	1440	2015-05-10	16	62		38%	NS	128	0	380	164	12
2F18P	BRENDA MINE	Okanagan	1453	2014-05-15	N/A	0			0	10	0	208	20	20
2F19	OYAMA LAKE	Okanagan	1365	NS					NS	NS	97	97	N/A	1
2F20	VASEUX CREEK	Okanagan	1403	2015-05-14	0	0			0	NS	0	80	7	40
2F21	BOULEAU LAKE	Okanagan	1405	NS					NS	NS	173	328	328	3
2F23	MACDONALD LAKE	Okanagan	1742	2015-05-15	40	180		54%	NS	NS	0	652	334	19
2F24	ISLAHT LAKE	Okanagan	1492	NS					115	0	0	352	221	6
2F25	POSTILL LAKE (UPPER)	Okanagan	1500	NS					NS	NS	N/A	N/A	N/A	N/A
2G03P	BLACKWALL PEAK	Similkameen	1934	2014-05-15	102	469		70%	844	571	208	1481	671	45
2G04	LOST HORSE MOUNTAIN	Similkameen	1988	2015-05-14	34	126		75%	285	92	0	577	169	47
2G05	MISSEZULA MOUNTAIN	Similkameen	1602	2015-05-14	0	0			138	0	0	218	32	50
2G06	HAMILTON HILL	Similkameen	1477	2015-05-20	0	0			NS	0	0	434	110	35
3A01	GROUSE MOUNTAIN	South Coast	1126	NS					NS	NS	528	1714	N/A	3
3A02	POWELL RIVER (UPPER)	South Coast	1002	NS					NS	NS	816	816	816	1
3A05	POWELL RIVER (LOWER)	South Coast	882	NS					NS	NS	378	378	378	1
3A09	PALISADE LAKE	South Coast	898	NS					NS	NS	336	3600	1968	4
3A10	DOG MOUNTAIN	South Coast	1007	2014-05-20	0	0			NS	1180	0	2920	1041	27
3A19	ORCHID LAKE	South Coast	1178	2014-05-20	0	0			NS	NS	774	3730	1729	30
3A20	CALLAGHAN CREEK	South Coast	1009	NS					NS	NS	55	1311	444	16
3A22P	NOSTETUKO RIVER	South Coast	1457	2014-05-15	0	0			229	164	19	939	355	24
3A24P	UPPER MOSLEY CREEK	South Coast	1655	2014-05-15	14	98		66%	135	0	0	467	149	24
3A25P	SQUAMISH RIVER (UPPER)	South Coast	1387	2014-05-15	14	474		32%	984	1582	709	2980	1486	23
3B01	FORBIDDEN PLATEAU	Vancouver Island	1110	NS					NS	NS	345	2631	1576	27

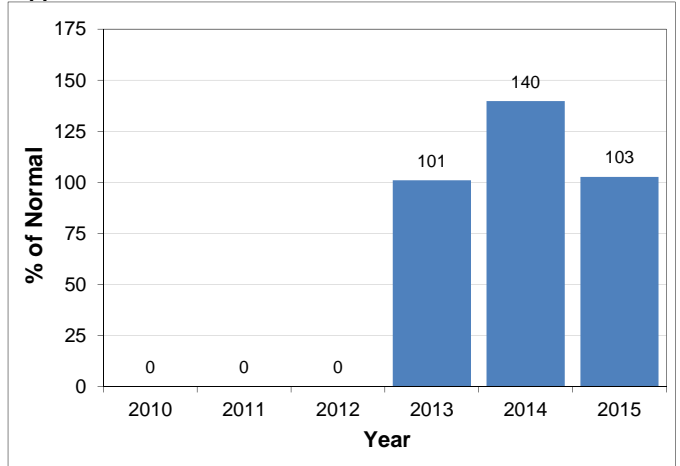
2015 Automated Snow Pillow/Manual Snow Survey Data			May 15th						Historic Snow Water Equivalent (mm)					
Station ID	Name	Basin	Elevation (masl)	Survey Date YYYY-MM-DD	SD (cm)	SWE (mm)	Code	SWE % 1981-2010 Normal	2014 SWE (mm)	2013 SWE (mm)	Minimum (mm)	Maximum (mm)	1981-2010 Normal (mm)	Years of Record
3B02A	MT. COKELY	Vancouver Island	1267	NS					NS	NS	NA	NA	NA	NA
3B04	ELK RIVER	Vancouver Island	270	NS					NS	NS	NA	NA	NA	NA
3B10	UPPER THELWOOD LAKE	Vancouver Island	1014	NS					NS	NS	1364	2697	1731	7
3B13	HEATHER MOUNTAIN	Vancouver Island	1170	NS					NS	NS	1519	1519	N/A	1
3B17P	WOLF RIVER	Vancouver Island	1422	2014-05-15	N/A	137		11%	681	860	213	2719	1229	31
3B18	WOLF RIVER (MIDDLE)	Vancouver Island	1050	NS					NS	NS	0	1148	481	13
3B19	WOLF RIVER (LOWER)	Vancouver Island	615	NS					NS	NS	0	549	78	13
3B23P	JUMP CREEK	Vancouver Island	1134	2014-05-15	N/A	0			440	544	0	3500	1097	17
3B24	HEATHER MOUNTAIN UPPER	Vancouver Island	N/A	NS					NS	NS	NA	NA	NA	NA
3C07	WEDEENE RIVER SOUTH	Central Coast	196	NS					NS	NS	232	232	232	1
3C08P	BURNT BRIDGE CREEK	Central Coast	1329	2014-05-15	83	526		83%	586	418	184	1438	634	15
3D01C	SUMALLO RIVER WEST	Skagit	801	NS					NS	NS	NA	NA	NA	NA
3D02	LIGHTNING LAKE	Skagit	1254	NS					NS	NS	544	544	NA	1
3D03A	KLESILKWA	Skagit	1134	NS					NS	NS	0	490	11	4
4A02	PINE PASS	Peace	1439	NS					NS	NS	408	1570	1242	25
4A02P	PINE PASS	Peace	1386	2014-05-15	186	923		92%	1030	941	813	1654	999	24
4A03	WARE (UPPER)	Peace	1563	NS					NS	NS	114	114	114	1
4A04	WARE (LOWER)	Peace	969	NS					NS	NS	0	0	0	1
4A05	GERMANSEN (UPPER)	Peace	1489	NS					NS	NS	272	414	272	4
4A06	TUTIZZI LAKE	Peace	1043	NS					NS	NS	0	0	0	1
4A07	LADY LAURIER LAKE	Peace		NS					NS	NS	420	420	420	1
4A09	PULPIT LAKE	Peace	1331	NS					NS	NS	230	293	262	2
4A09P	PULPIT LAKE	Peace	1331	2014-05-15	64	188		70%	256	288	14	562	267	23
4A10	FREDRICKSON LAKE	Peace	1323	NS					NS	NS	74	74	74	1
4A11	TRYGVE LAKE	Peace	1409	NS					NS	NS	269	269	269	1
4A12	TSAYDAYCHI LAKE	Peace	1173	NS					NS	NS	302	302	302	1
4A13	PHILIP LAKE	Peace	1013	NS					NS	NS	128	128	128	1
4A16	MORFEE MOUNTAIN	Peace	1427	NS					NS	NS	343	1072	535	10
4A18	MOUNT SHEBA	Peace	1480	NS					NS	NS	340	1179	794	9
4A20	MONKMAN CREEK	Peace	1566	NS					NS	NS	0	912	478	8
4A21	MOUNT STEARNS	Peace	1514	NS					NS	NS	45	45	45	1
4A25	FORT ST. JOHN AIRPORT	Peace	692	NS					NS	NS	0	0	N/A	4
4A27P	KWADACHA RIVER	Peace	1695	2014-05-15	58	4		1%	67	266	90	468	334	16
4A30P	AIKEN LAKE	Peace	1061	2014-05-15	N/A	3		5%	68	4	0	206	55	28
4B01	KIDPRICE LAKE	Skeena-Nass	1415	NS					NS	NS	534	1278	534	2
4B02	JOHANSON LAKE	Skeena-Nass	1480	NS					NS	NS	178	178	178	1
4B03A	HUDSON BAY MTN	Skeena-Nass	1452	2015-05-15	82	384		91%	381	274	160	822	424	41
4B04	CHAPMAN LAKE	Skeena-Nass	1485	2015-05-15	76	344		75%	NS	NS	238	689	461	6
4B06	TACHEK CREEK	Skeena-Nass	1133	NS					NS	NS	18	152	N/A	4

Snow Basin Index Graphs - May 15, 2015

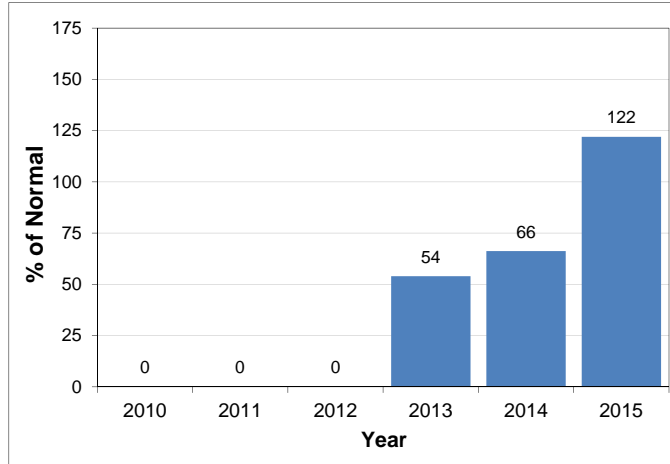
Upper Fraser West



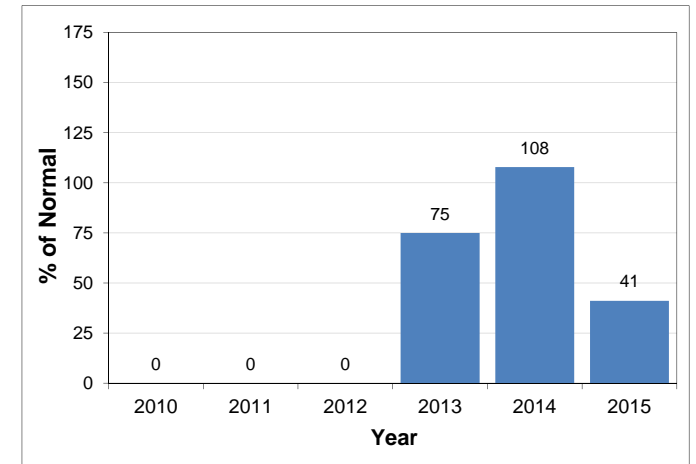
Upper Fraser East



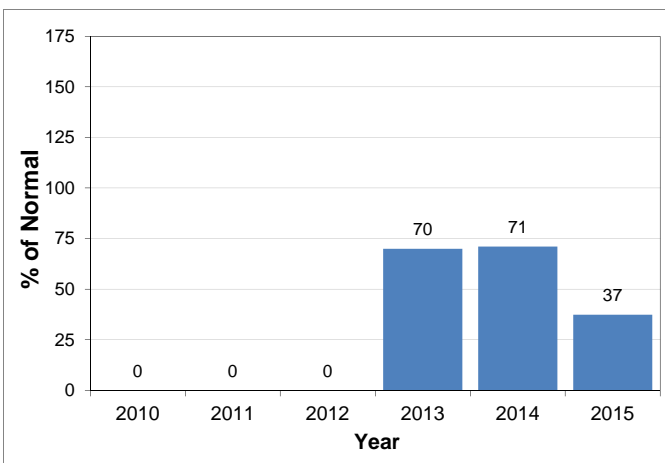
Nechako



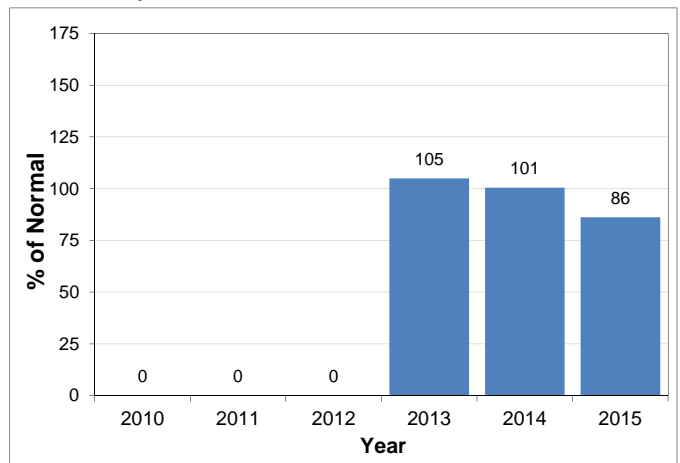
Middle Fraser



Lower Fraser

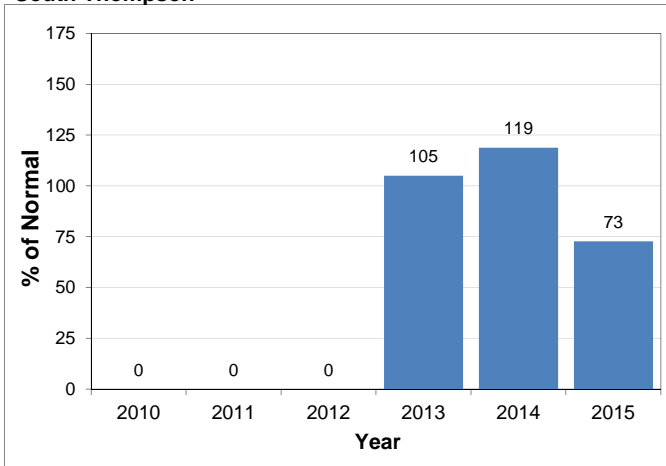


North Thompson

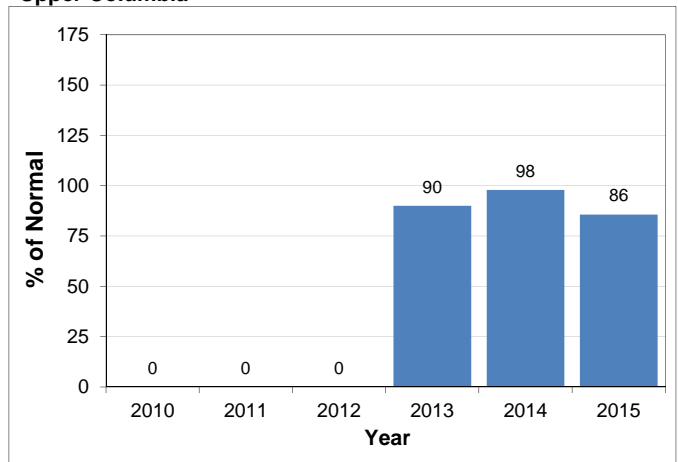


Snow Basin Index Graphs - May 15, 2015

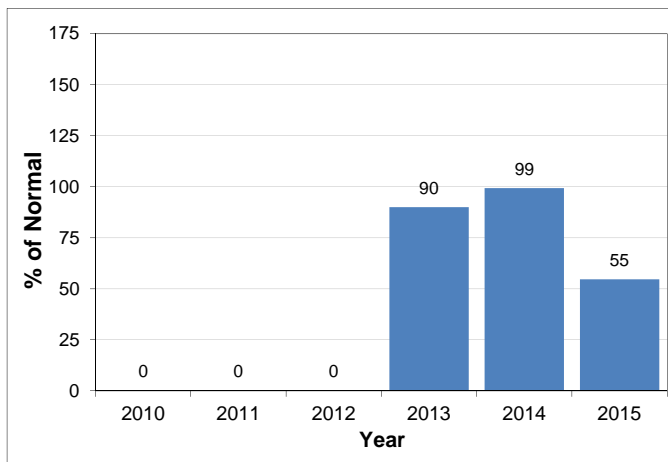
South Thompson



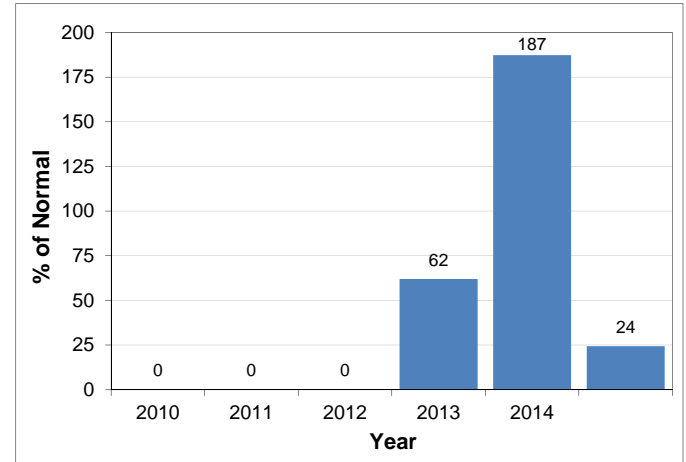
Upper Columbia



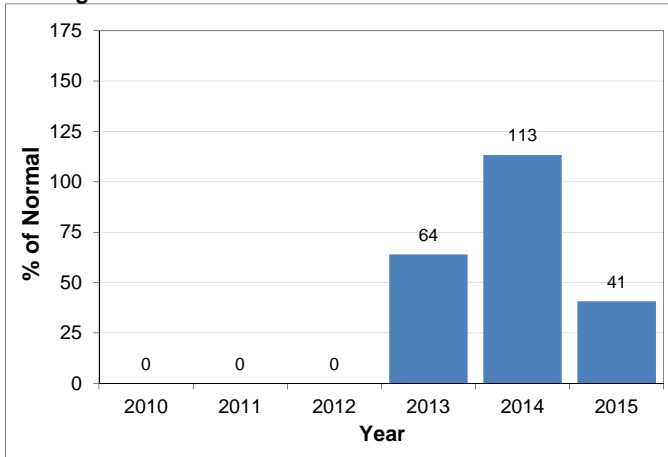
West Kootenay



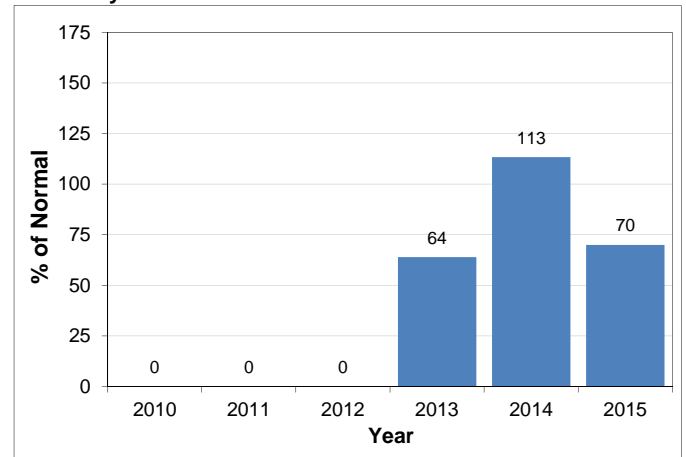
East Kootenay



Okanagan

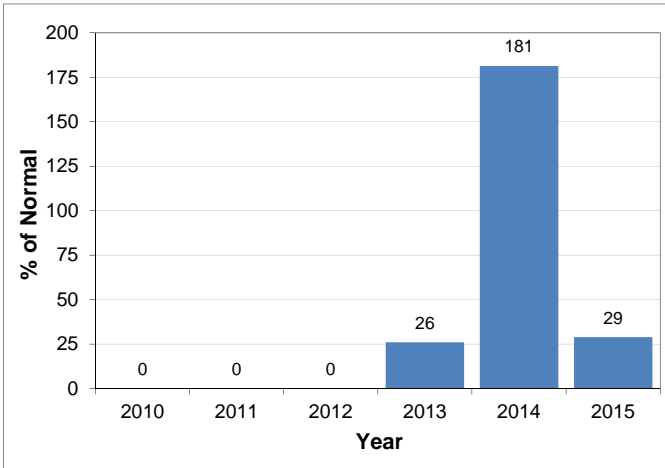


Boundary

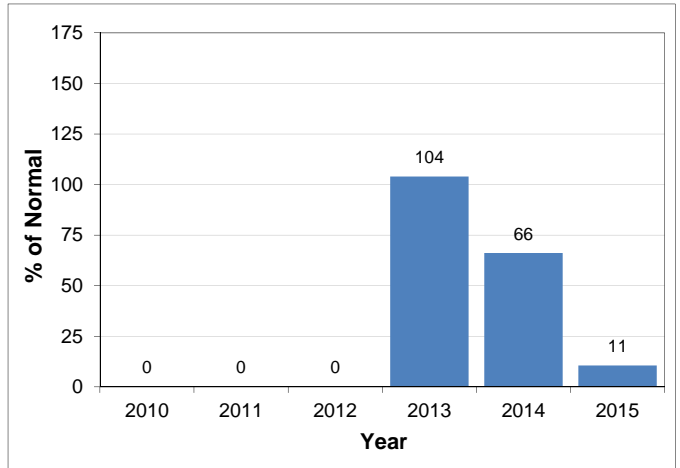


Snow Basin Index Graphs - May 15, 2015

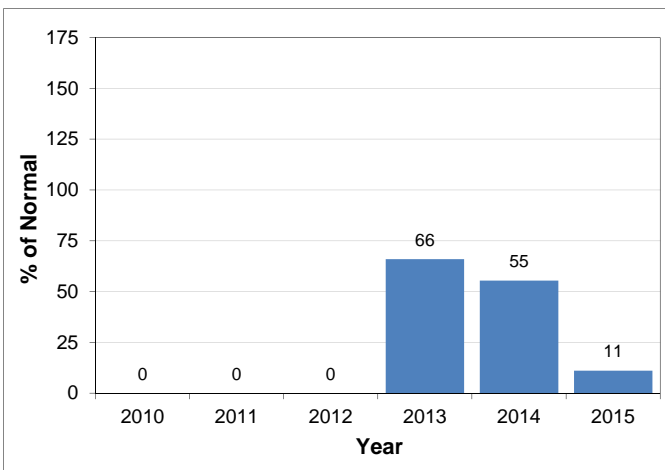
Similkameen



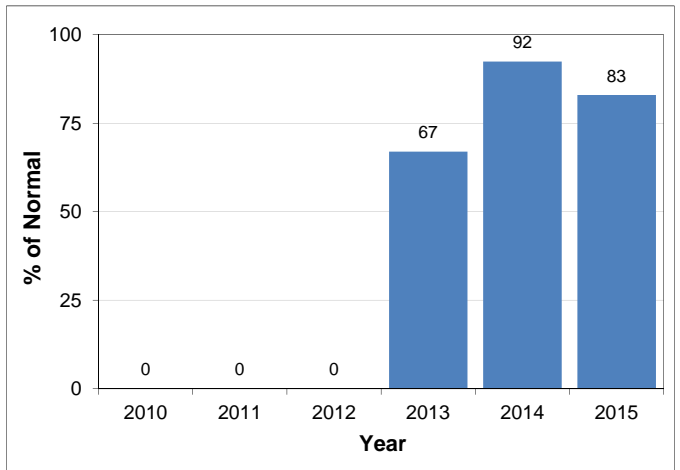
South Coast



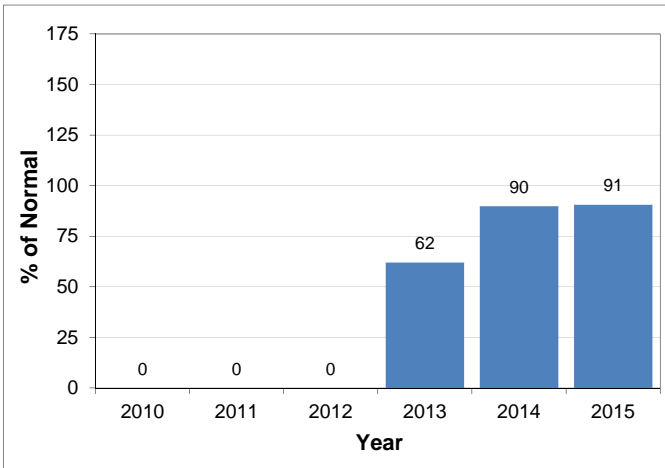
Vancouver Island



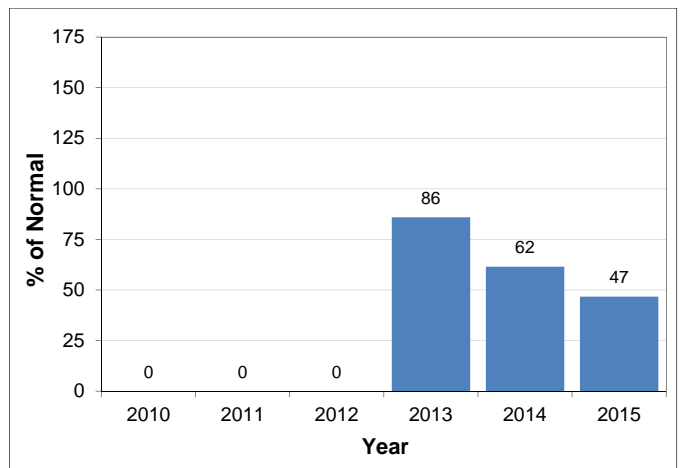
Central Coast



Skeena-Nass



Peace



Snow Basin Index Graphs - May 15, 2015

Stikine

